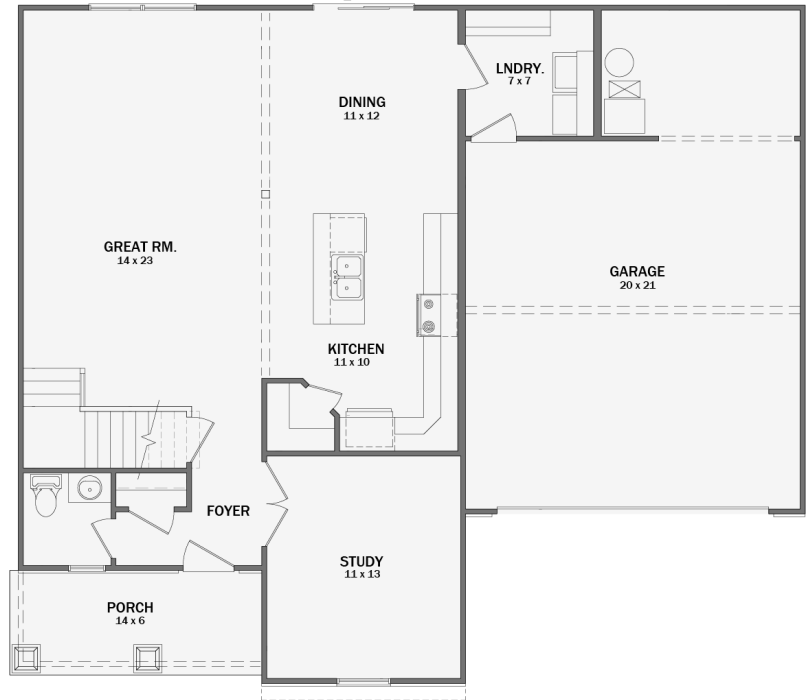
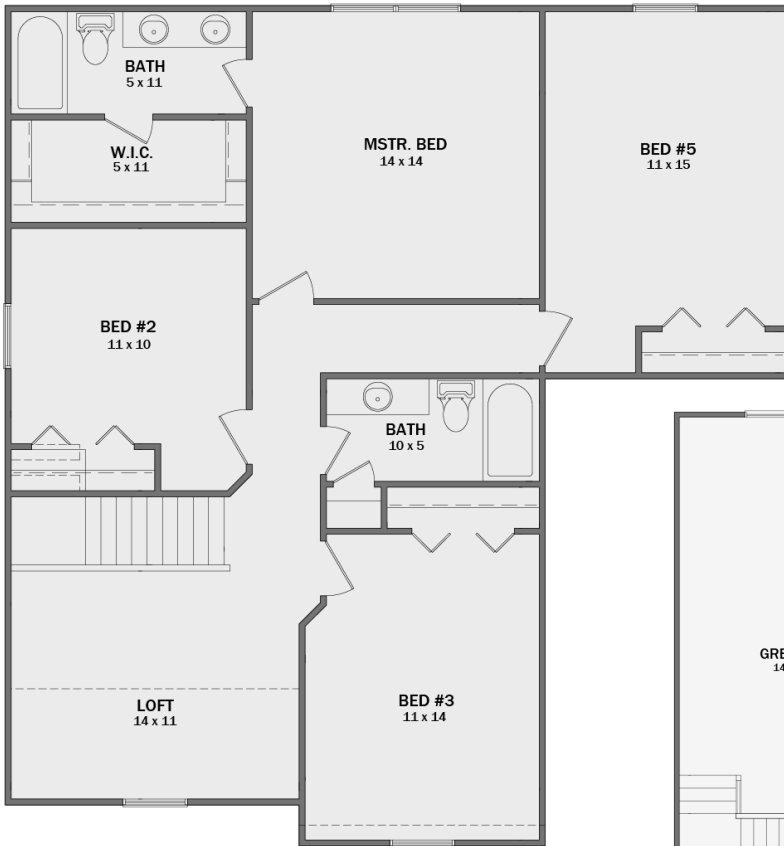


HARDING



STARKS
Signature Homes



FIRST FLOOR: 1022 SQ. FT.
 SECOND FLOOR: 1233 SQ. FT.
 TOTAL: 2255 SQ. FT.
 GARAGE: 536 SQ. FT.
 PORCH: 81 SQ. FT.



4 BEDROOMS



2.5 BATHROOMS



2 CAR GARAGE



2255 SQ.FT

This spacious two-story home features four bedrooms, 2.5 bathrooms, a versatile loft, and a dedicated study. The open layout offers ample living space, while a two-car garage provides convenient storage and parking. Perfect for family living, this home combines functionality with modern design.



WWW.STARKSSIGNATUREHOMES.COM



3472 STELLHORN RD.
 FORT WAYNE, IN 46815



INFO@STARKSSIGNATUREHOMES.COM



260.557.1093