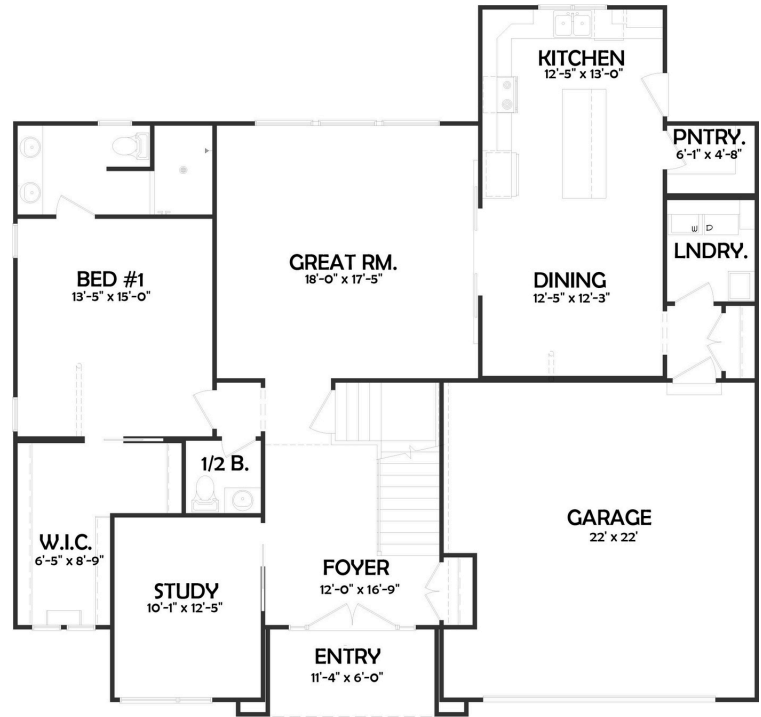
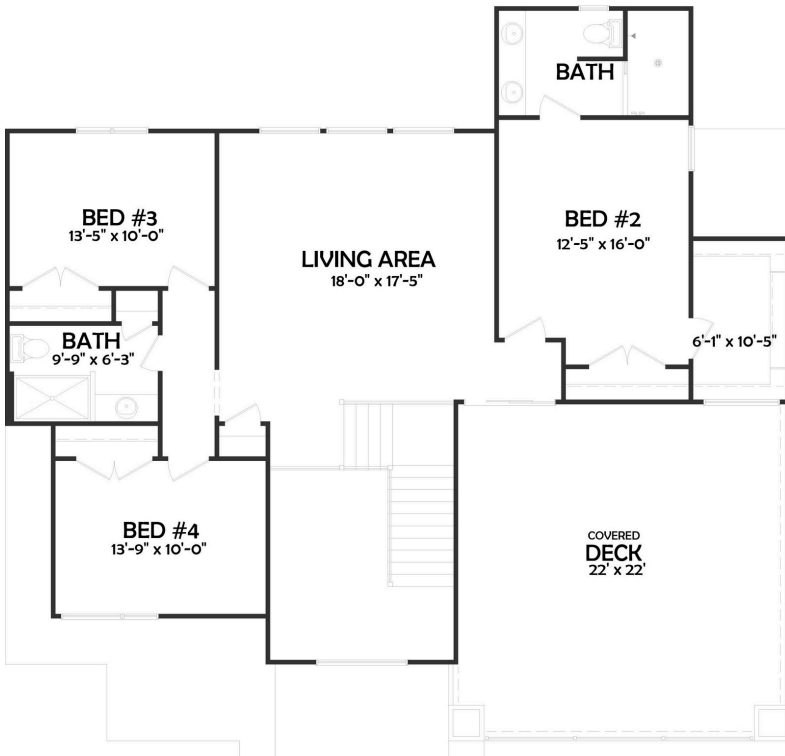


BAYDREAM



STARKS
Signature Homes



FIRST FLOOR: 1597 SQ. FT.
 SECOND FLOOR: 1209 SQ. FT.
 TOTAL: 4264 SQ. FT.
 BSMT. (FIN.): 1458 SQ. FT.
 BSMT. (TOT.): 1585 SQ. FT.
 GARAGE: 467 SQ. FT.
 ENTRT: 76 SQ. FT.



4 BEDROOMS



3.5 BATHROOMS



2 CAR GARAGE



4264 SQ. FT

This charming two-story home features 4 bedrooms, 3.5 bathrooms, and a dedicated study with a pocket door off the foyer. The spacious layout includes a great room with a dining room, perfect for family gatherings. Walk-in closets provides ample storage and a 2 car garage with a deck above.



WWW.STARKSSIGNATUREHOMES.COM



3472 STELLHORN RD.
 FORT WAYNE, IN 46815



INFO@STARKSSIGNATUREHOMES.COM



260.557.1093