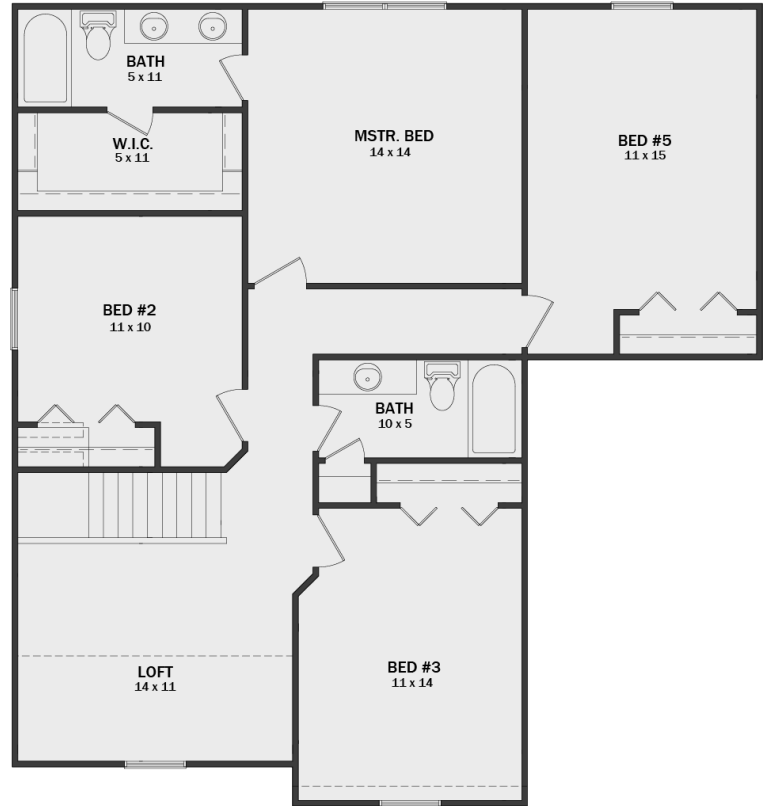


# PADDOCK I



**S**TARKS  
*Signature Homes*



FIRST FLOOR: 1022 SQ. FT.  
 SECOND FLOOR: 1233 SQ. FT.  
 TOTAL: 2255 SQ. FT.  
 GARAGE: 536 SQ. FT.  
 PORCH: 81 SQ. FT.



4 BEDROOMS



2.5 BATHROOMS



2 CAR GARAGE



2255 SQ. FT

This inviting two-story home features four bedrooms, 2.5 bathrooms, and a dedicated study. The layout includes a cozy front porch and a two-car garage. With its spacious design and modern amenities, this home is perfect for comfortable family living.



WWW.STARKSSIGNATUREHOMES.COM



3472 STELLHORN RD.  
 FORT WAYNE, IN 46815



INFO@STARKSSIGNATUREHOMES.COM



260.557.1093